



**KENNEBEC MESSALONSKEE TRAILS**

Our **VISION** is a network of bicycle and pedestrian trails, contributing to a healthy and active community.

Our **MISSION** is to promote, create, and help maintain recreational and fitness trails along our waterways, connecting the communities of Waterville, Winslow, Benton, Fairfield and Oakland.

## BLAZINGS

Waterville received an award as **Maine's #1 Walking City** by Prevention Magazine and the American Association of Medical Podiatrists

The National Parks Service Rivers and Trails Program gave KMTrails **"top billing"** in their advertising of their services to communities throughout New England.

**CONTINUED ON PAGE 2**

# KENNEBEC MESSALONSKEE TRAILBLAZER

SUMMER 2008

CREATING COMMUNITY TRAILS ALONG OUR WATERWAYS

## WATERVILLE QUARRY ROAD RECREATIONAL PROJECT

*A Message from President Peter Garrett*

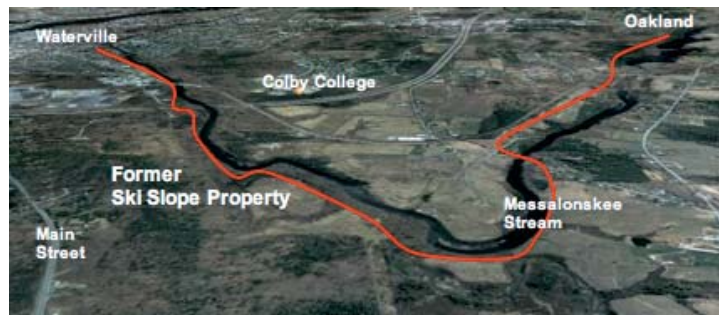


KMTrails is about to enter a whole new phase in trail development along the riversides of our City-and-Four-Towns community. We are on our way thanks to the inspired thinking of City Manager Mike Roy. He negotiated a truly remarkable deal, namely to swap a 3/4 acre parcel – the Jade Island Restaurant, for a 100 acre piece of undeveloped land known as the Colby Ski Slope parcel!

The Jade Island Restaurant was originally built to be the club house for the City golf course, which was constructed on land purchased using Federal funds requiring that all the land be designated as recreational forever. As it turned out, however, there was no need for such a large golf club house, so the building was leased and became Jade Island. The City was never comfortable as a leaseholder and wanted to sell, but could not...unless they could find a parcel of equal or greater value that would be designated as recreational forever.

KMTrails had identified the Colby Ski Slope parcel as a potential route for part of its riverside trail network. That got Mike Roy thinking, and talking. It seemed to be a good fit. Mr. and Mrs. Au, owners of Jade Island, were eager to buy the restaurant building and parking lot so that they could make improvements and additions. Colby College had not used the ski slope parcel as a recreational resource for many years and had no firm plans to do so, and thus became a willing seller.

Enter John Koons, a Colby graduate, local dentist, and most importantly, a ski enthusiast. John remembers the Colby ski slope with great fondness. He dreams of bringing it back to life for winter enjoyment for everyone in the community. As we all know, however, the snow is often not good enough to warrant such optimism, unless we make snow, and groom it regularly during the three months of real winter from December through February. John has been doing his homework, finding success stories north of us, in Presque Isle and Fort Kent, where cross-country ski centers are already established and successful, and also to our south, in New Gloucester, Cumberland, and even in Newton, MA, where made and groomed snow serve an eager community of people who love to make the very best of the winter season.



OBLIQUE AERIAL VIEW OF MESSALONSKEE STREAM. SOON WE WILL HAVE A COMPLETED TRAIL ALL THE WAY FROM ONE END TO THE OTHER ALONG THIS BEAUTIFUL WATERWAY. PHOTO FROM GOOGLE EARTH.

Plans are being drawn up for trails that will be wonderful in winter, and will also serve the growing community of walkers, hikers, mountain bikers and others who love the other three seasons just as much!

## A SHORT HISTORY

**1996**

Idea of riverside trails floated at REM's Community Catalyst.



**1999**

Waterville Rotary Community Project.



**2000**

Kennebec River Trail Committee formed.



**2001**

Applied for feasibility funding.



**2002**

Scope of project expanded to 18 miles of trails. Incorporated as Kennebec Messalonskee Trails



**2003**

Feasibility Study complete, Phase I and II.



**2004**

Trail construction begins on North Street Recreational Area, Benton-Winslow rail bed and South End Island.



**2005**

Rotary Centennial Trail from Benton to Winslow completed!



**2006**

KMT segment designated as part of East Coast Greenway.



**2007**

Messalonskee Stream Trail officially opened on Nat'l Trails Day in June.



**2007**

KMT hires its first Executive Director.



**2008**

Waterville named Maine's #1 Walking City by Prevention Magazine and the American Association of Medical Podiatrists

## WHAT IS KMTRAILS ALL ABOUT?

*By Executive Director, Donald F. Sproul*

Having just started my new duties as executive director of Kennebec Messalonskee Trails, I have had a wonderful learning experience for the past 4 months. Although I had read the mission statement and had discussions with members of the Board of Directors, I wasn't able to articulate exactly what KMTrails did when I accepted the position in mid-November. Even now, I am not sure I can explain it with 100% accuracy. So if I am having trouble defining KMTrails after immersing myself several hours every week to it, I wonder how well the general public understands exactly what KMTrails does?

Kennebec Messalonskee Trails:

- Advocates for walking and biking trails throughout Benton, Fairfield, Oakland, Waterville and Winslow.
- Assists municipalities and landowners in planning trail routes, especially along waterways.
- Serves as an advisor to municipalities and landowners in identifying potential funding sources for trails.
- Helps by providing volunteer expertise in the submission of grants for trail development.
- Provides volunteer labor to negotiate access to private land for trail routes.
- Raises money to help municipalities and landowners meet their matching fund obligations.
- Promotes the safe and proper use of trails by publishing maps, pamphlets, and other resources to be used by hikers and bikers.
- Develops consistent signage to be used on all trails, so the public is aware of trail entrances and parking.
- Facilitates the development of trails by bringing interested parties together.

In the past 4 months, KMTrails has reorganized its' committee structure and the 4 new standing committees have all met multiple times, identified goals, and begun working to successfully meet their respective goals. The 4 new standing committees are: Trails Development Committee, Public Relations Committee, Site Selection and Access Committee, and Finance & Fundraising Committee.



As is true with most organizations, much work is being done by few people. Our committees meet 6-10 times per year, usually for 1 hour and never for more than two hours at each meeting. There is some "leg-work" to be accomplished between committee meetings. Great expertise is not required; great enthusiasm is. **Do you have an interest in helping on one of these committees? Do you have 2 hours per month you can give? If so, we would love to hear from you! Call 873-6443**

[WWW.KMTRAILS.ORG](http://WWW.KMTRAILS.ORG)

## BLAZINGS

CONTINUED FROM PAGE 1

**Four State/Federal grants for trail planning and construction have been awarded to Towns in our service area.** KMTrails helped with the writing of these grants, but prefer that the Municipality actually manage the planning or construction.

The four were awarded to:

**OAKLAND** \$30,000 for construction of a Phase 2 extension to the Messalonskee Stream Trail from Rice Rips Road to the County Road.

**WATERVILLE** \$29,000 for improvement of Quarry Road to access the former Colby Ski Slope property for a recreational park, the initial design of which is now underway.

**WATERVILLE** \$20,000 for the evaluation of options for a pedestrian connection between the Hathaway Center and Main Street downtown.

**WINSLOW** \$212,000 for engineering and construction of a short connector trail from the 2-cent bridge around the Scott municipal park, and leading to the Winslow School trail network.

In each case the Towns or City, together with KMTrails, will be providing a match of in-kind services or cash to the projects. Work on each is expected to begin this year.

## ADVENTURE ABOUNDS

The major focus for KMTrails these days is to provide our trails with adequate signage. You have probably seen our roadside signs. They have been instrumental in getting more people to know where to get on our trails. You may also have seen our trail parking signs, and our mile markers, and directional signs. Soon we will be working on signs to illustrate both human and natural history. These trails are a great educational venue, with interesting geology, botany, and wildlife habitat. The Kennebec has so much history, being the major corridor for Native Americans, the route for Benedict Arnold's adventure, the site of the last log runs in the US, and now the site of an extraordinary river cleanup. The Messalonskee is equally interesting, the trail starts in Oakland on the foundations of an axe factory that earned the Town the nickname "Axe Capital of the World".

We will keep building more trails, of course, until the plan is complete in its entirety. It is difficult to say how long that might take, but perhaps until 2015.

## SUPPORT YOUR TRAILS

KMTrails has been particularly successful in obtaining grants to further the development of trails, and to encourage groups to give generously towards the fulfillment of our goals. Don Sproul recently added it all up, finding that for every \$1 KMTrails has raised and contributed towards the planning and construction of riverside trails in our area, we have also obtained grants and outside support to the tune of \$17.50. That is an extraordinary ratio, and speaks volumes to the degree of cooperation and interest that has been generated towards the success of our project. So far \$1.5m has been spent or is already committed. We estimate that the total cost of our project is likely to exceed \$7m.

Our money comes from you, our financial supporters, our members. It's a



**“THE KENNEBEC HAS SO MUCH HISTORY, BEING THE MAJOR CORRIDOR FOR NATIVE AMERICANS, THE ROUTE FOR BENEDICT ARNOLD’S ADVENTURE, THE SITE OF THE LAST LOG RUNS IN THE US, AND NOW THE SITE OF AN EXTRAORDINARY RIVER CLEANUP.”**

bit like public broadcasting. You can listen to it, or use our trails for free, but if you like what we are doing, we encourage you to become a member with payment of dues with whatever additional contribution you wish. You, and others like you, will be rewarded by a donor's kiosk or monument at Head of Falls, which will become Head of Trails.

Major funding for trail construction comes from two State programs, namely the Recreational Trail Program administered by the Department of Conservation, and several programs administered by the Department of Transportation. Funds for these programs are principally a federal pass-through from the Transportation Act. There is more and more support for our kind of work in Congress, because of the clear benefits to public health and alternative transportation.

## CLEAN IT UP!

Without routine maintenance our trails will fall into disrepair. There are several sides to this issue, all of which require acknowledgement.

- First is that the kind of people who use our trails, people like you, leave very little trash, and in any case

tend to pick up after others as a matter of course. We even pick up twigs and branches that have fallen on the trail during winter.

- Second is that each municipality is taking on the larger responsibility of maintenance that is so necessary. I'll give you one example from the Rotary Centennial Trail. It crosses a Town Line, being about 2/3 in Benton and 1/3 in Winslow. So, with poetic reasoning, Benton will mow the sides of the entire trail twice in a summer, while Winslow uses their brush flail once in the fall. Such cooperation is the key to our success.
- Third is that there is a growing interest in our having a trail cleanup day for students and others. Perhaps the weekend closest to Earth Day, April 22, will become our standard trail cleanup date. Colby students and others did so this year, under the guidance of Ernie Baker and Carl Croce.
- Lastly, we are discussing the creation of an endowment fund to help cover major maintenance on all of our trails. For this we will be looking at major fundraising.



## KENNEBEC MESSALONSKEE TRAILS

P.O. Box 2388  
Waterville, ME 04903

PRESORT STD  
U.S. POSTAGE  
PAID  
Permit # 26  
Waterville, ME



**Farmers Market 2-6 pm**  
**Every Thursday in the Concourse, at**  
**the corner of Main/Appleton**  
**Streets in Downtown Waterville**  
**Walk to shop for your groceries**  
**and support the local economy**

### OFFICERS

President: Peter Garrett  
Vice President: Carl Croce  
Treasurer: Mike Gallagher  
Secretary: Jackie Dalton

### BOARD OF DIRECTORS

Ernie Baker  
Dan Beaulieu  
Vladimir Blazanin  
John Bonney  
Rene Burdet  
Matt Clark  
David Gulak  
Shannon Haines  
John Koons  
Ryan Liberty  
Matt Skehan



# LET'S FACE IT.

KMTrails' all volunteer Board of Directors has all they can handle. We need your help by serving on a committee. Most committees meet once every other month. Some are seasonal. Some are called upon on an as needed basis. Basically, we need people with talents in particular areas to do some things the Board can't. If you want to make a difference in Greater Waterville, contact us about joining one of these committees:

### FUNDRAISING AND BUDGET

From events like National Trails Day to grant applications, we need people with experience at raising funds to help us find the resources to build this network

### PUBLICITY

Generating the newsletter, maintaining the website, and getting the word out – help us project our image.

### MEMBERSHIP

Sign up new members, keep records organized, develop new benefits of membership and handle correspondence.

### NATIONAL TRAILS DAY

It's our biggest event of the year and we want it to be joined by others throughout the year. Want to help?

### MAINTENANCE

Now that we've got some actual trails, we need people to monitor them, report problems, and sometimes pick up a rake, shovel, chainsaw, or post-hole digger to keep our trails beautiful, even as we keep building. Think something's wrong with the trails? Help us fix it!

Whether you love to be outdoors or you're happier at a desk, we welcome your skills and talents.



We are a dynamic group with momentum. Show your support by becoming a member! All contributions are tax-deductible.

Name \_\_\_\_\_

Address \_\_\_\_\_

Phone \_\_\_\_\_

Email \_\_\_\_\_

- \$25 Membership & Sponsor One Foot of Trail
- \$100 A Long Stride
- \$250 Leaps & Bounds
- \$1,000 Going the Extra Mile
- Other \$ \_\_\_\_\_
- In-Kind (specify) \_\_\_\_\_

Make checks payable to Kennebec Messalonskee Trails.

Donations may be sent to:  
KMTrails, P.O. Box 2388,  
Waterville, ME 04903

**COME WALK WITH US...COME BIKE WITH US...COME JOIN US!**  
**CALL 873-6443**

[WWW.KMTRAILS.ORG](http://WWW.KMTRAILS.ORG)